



Anand Systems Engineering

Add-114/115/116, Acharya Industrial Estate Tejpal Compound,

Andheri - Kurla Rd, Saki Naka, Mumbai, Maharashtra 400072.

Email Id - [info@anandcontrol.com](mailto:info@anandcontrol.com)

Mob No- 9321755328

## DSL Indicating Lamp

### Crane DSL Busbar Indicator Lamp



Indicating Lamps activate when 3 Phase power is applied to your overhead EOT crane.

- ❖ Extremely Easy to install
- ❖ Very Easy Maintenance

## Display Distance of more than 200 Meters



DSL Indicating lamps are used in factories where DSL busbars are installed **to know when 3 Phase power is applied to the crane**. DSL Indicating Lamp take 3 phase power as input and emit three colours in the visible spectrum- **Red, Yellow and Blue**. They act like a status indicator for the presence or absence of the 3 phase input power. The intensity of the light reduces or increases with the change in 3 phase input voltage. In the situation where, 1 phase is not available or phase failure, the light for that particular phase will switch off.

During malfunctioning of crane or maintenance operations of crane, the DSL indicating lamp will indicate to everyone on the factory floor whether the power is present or absent.

Anand Systems Engineering DSL indicating Lamp can be easily installed by anyone with the help of 4 screws. Anand Systems engineering DSL indicating Lamp is constructed with extremely high quality and long lasting Light emitting Diodes. These LEDs do not require a heat sink .

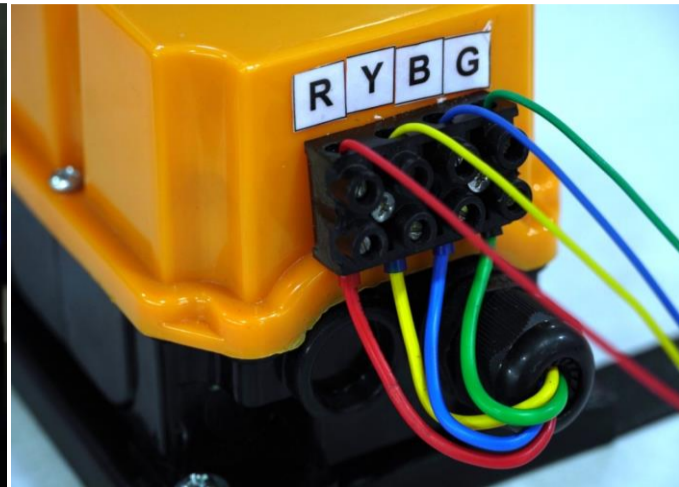
## Installation of 3 Phase DSL Indicating Lamp:

3 phase voltage display unit can be easily installed by anyone with the help of 4 screws. It is constructed with extremely high quality long lasting LEDs and powder coated metal body.

### Easy Side Viewing



### 3 Phase Connector



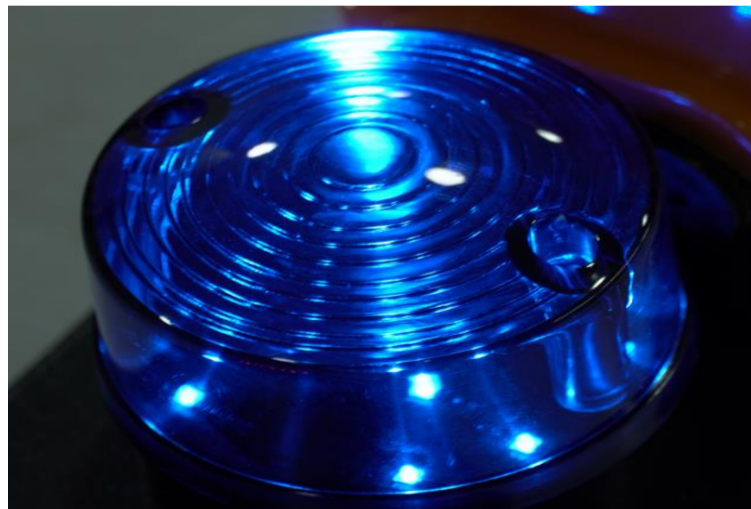
When Correct Three phase voltage is applied, all three indicating lamps light up and get illuminated.

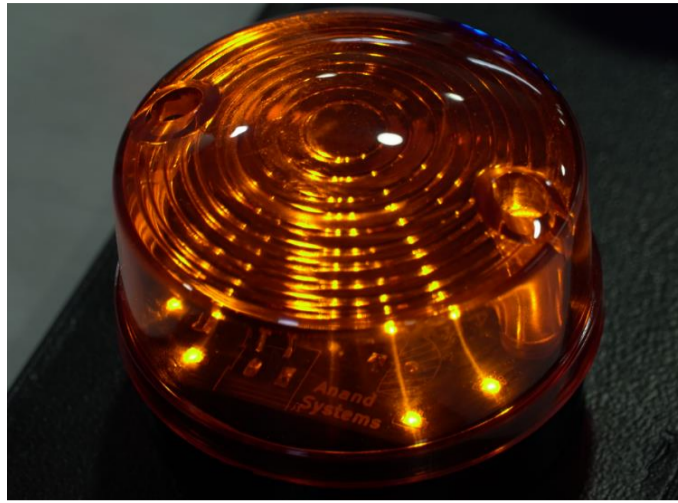


## Individual Indicating Lamp

Each Individual Lamp of the DSL Indicating Lamp is made up of 3 Parts.

- ❖ Transparent Polycarbonate Cover.
- ❖ Electronic Circuit with Leds
- ❖ Bottom ABS plastic Circuit Base

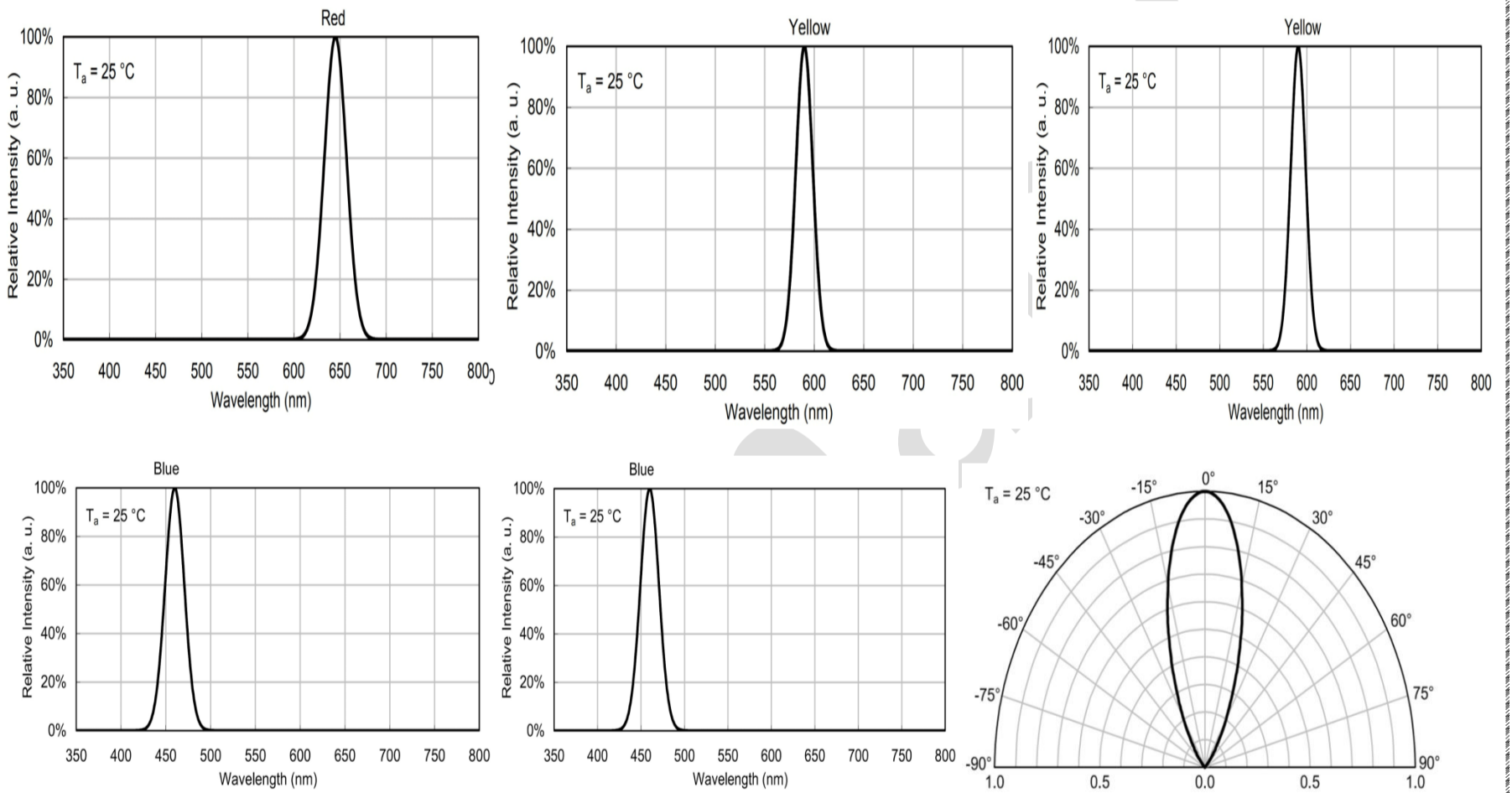




PCB Designed and manufactured by ANAND

## Relative Wavelength vs Intensity for each Individual

Wavelength value is traceable to CIE127-2007 standards



## SPECIFICATIONS OF DSL INDICATING LAMP

### ELECTRICAL SPECIFICATION

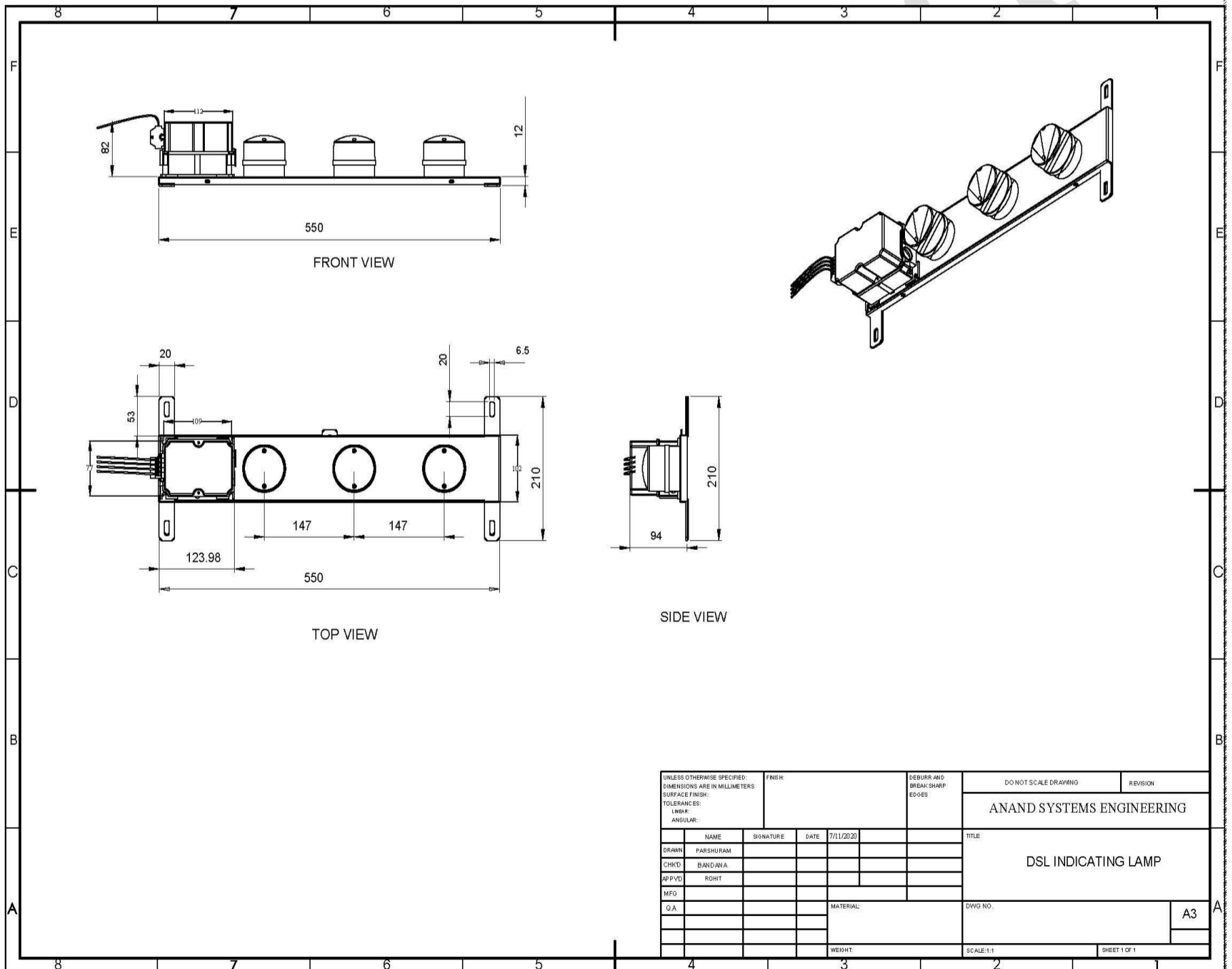
Input Power Supply	3 - Phase Without Neutral,415V
Power Consumption	0.3 Watts
Minimum Input Voltage	385 VAC
Maximum Input Voltage	440 VAC
Typical Input Voltage	415 VAC
Power Supply	Uses Step Down Isolation transformers to achieve galvanic isolation for safe installation,safe operation and safe maintenance.

## LED SPECIFICATIONS

Colors	Hyper Red, Super Bright Yellow, Hyper Blue
Visibility	300 Meters
Leds per Colour	: 12 Bright Leds
Viewing angle	180 Degrees
Led material	AlGaInP on GaAs substrate Light Emitting Diode for Red and Yellow & InGaN for Blue
Typical MCD	3000
RoHS Compliant	yes

## HOUSING

Body	2mm CRCA with black color Powder coating
Product Dimensions	: 100mm x 200mm
Installation	indoor/outdoor
Life Expectancy	5 Years
Operating Temperature	-25 to +85 C
PCB Dimension	60 mm
Product weight	800 grams



UNLESS OTHERWISE SPECIFIED: DIMENSIONS ARE IN MILLIMETERS SURFACE FINISH: TOLERANCES: LWD: ± ANGULAR:		FINISH:	DEBURR AND BREAK SHARP EDGES	DO NOT SCALE DRAWING	REVISION
ANAND SYSTEMS ENGINEERING					
DRWN:	NAME	SIGNATURE	DATE	TITLE	
CHKD:	PARSHURAM		7/11/2020	DSL INDICATING LAMP	
APPVD:	BANDANA				
MFG:	ROHIT				
QA:				MATERIAL:	DWG NO.
					A3
				WEIGHT:	SCALE: 1:1
					SHEET 1 OF 1